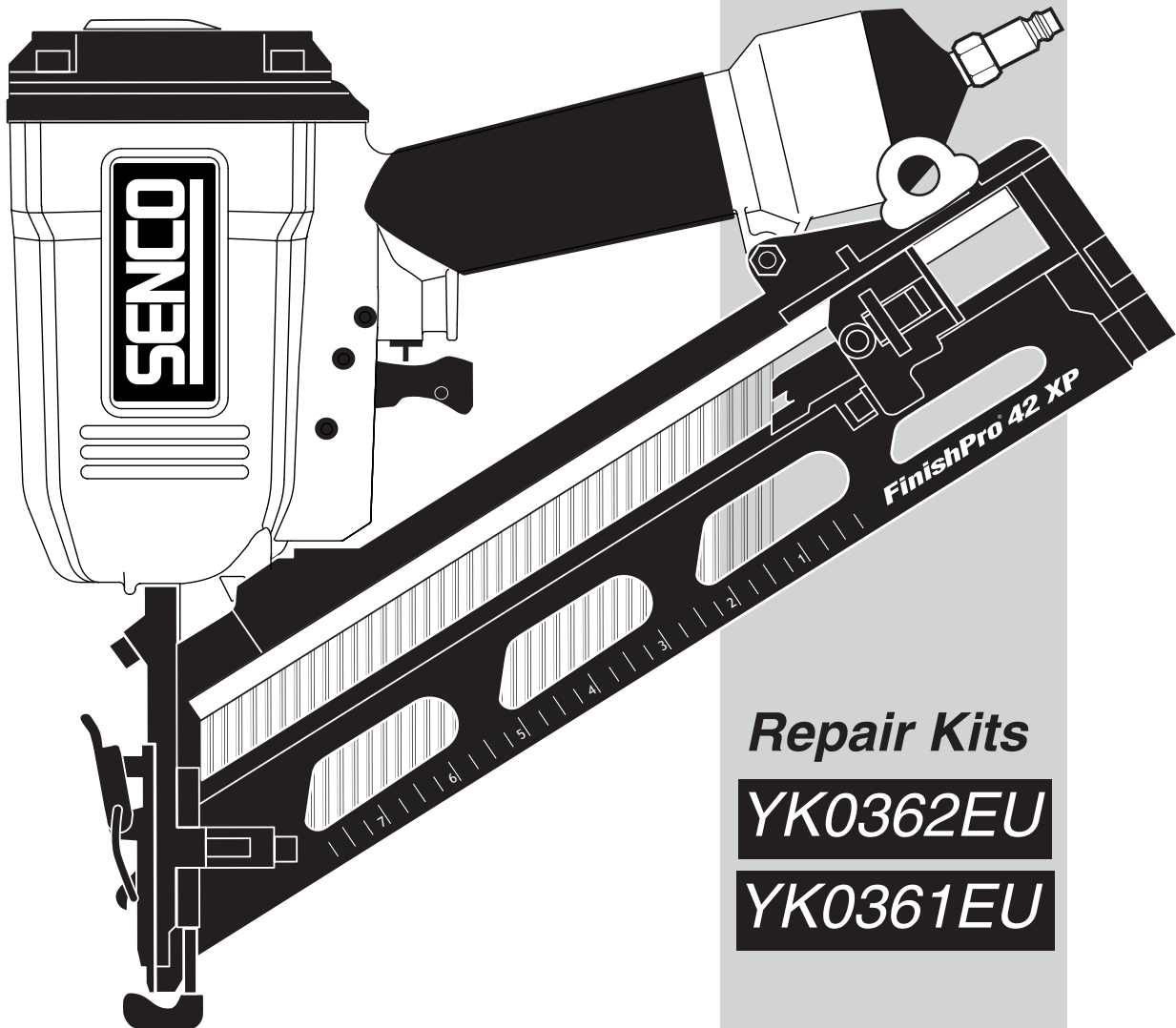


SENCO®

FinishPro® 42 XP **15 ga. Finish Nailer**



Parts Reference Guide



Repair Kits

YK0362EU

YK0361EU

* Schematic drawings inside

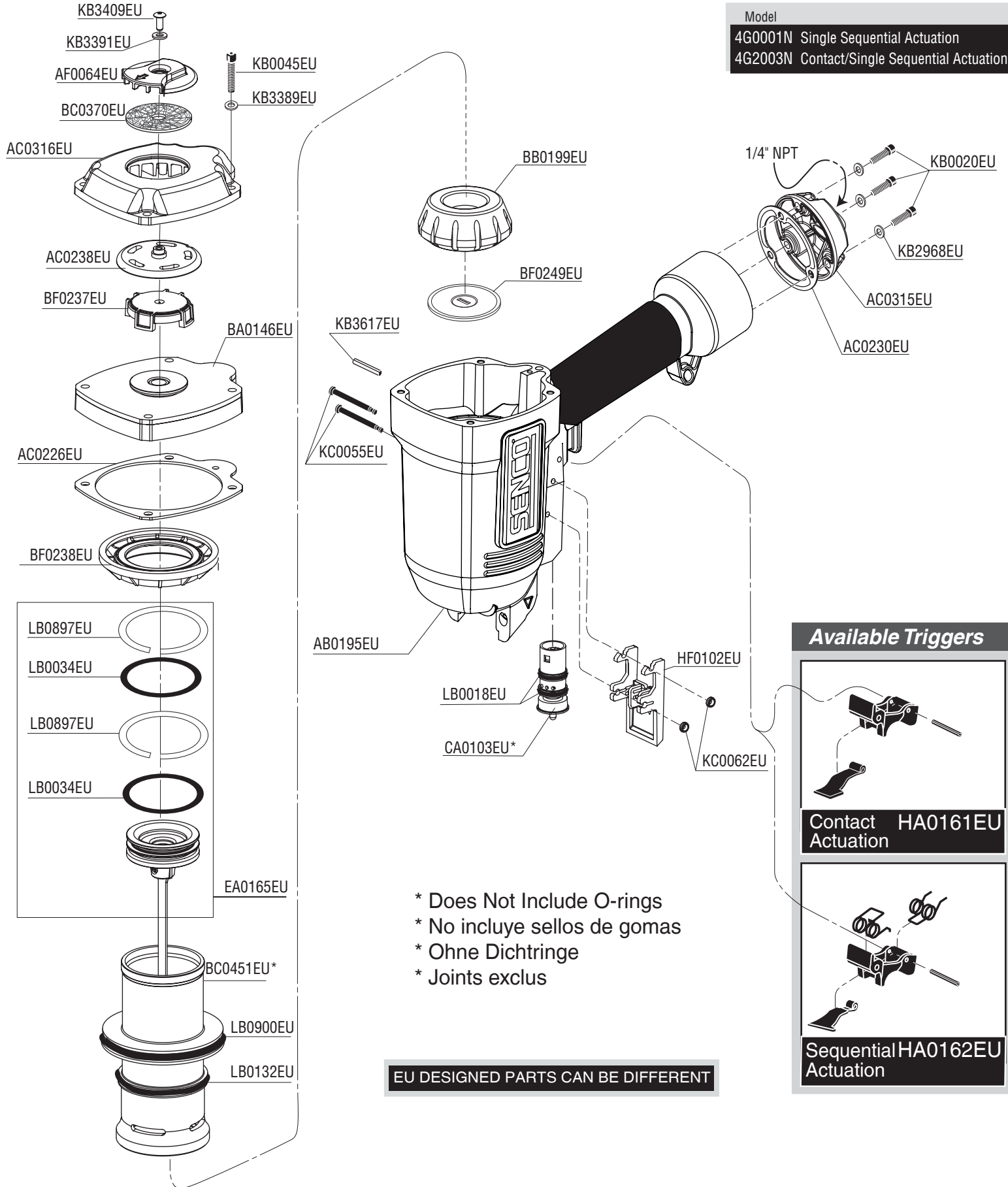
Senco Brands Inc.
4270 Ivy Pointe Blvd.
Cincinnati, Ohio 45245
Visit Our Website: www.senco.com
EMEA Website: www.verpa-senco.com

Questions? Comments? call SENCO's toll-free Action-line:
1-800-543-4596 (North and South America Only)
or e-mail: toolprof@senco.com

FinishPro® 42XP

SENCO®

Model
 4G0001N Single Sequential Actuation
 4G2003N Contact/Single Sequential Actuation



KB3617EU
 KC0055EU
 AB0195EU

LB0018EU
 CA0103EU*
 HF0102EU
 KC0062EU

- * Does Not Include O-rings
- * No incluye sellos de gomas
- * Ohne Dichtringe
- * Joints exclus

EU DESIGNED PARTS CAN BE DIFFERENT

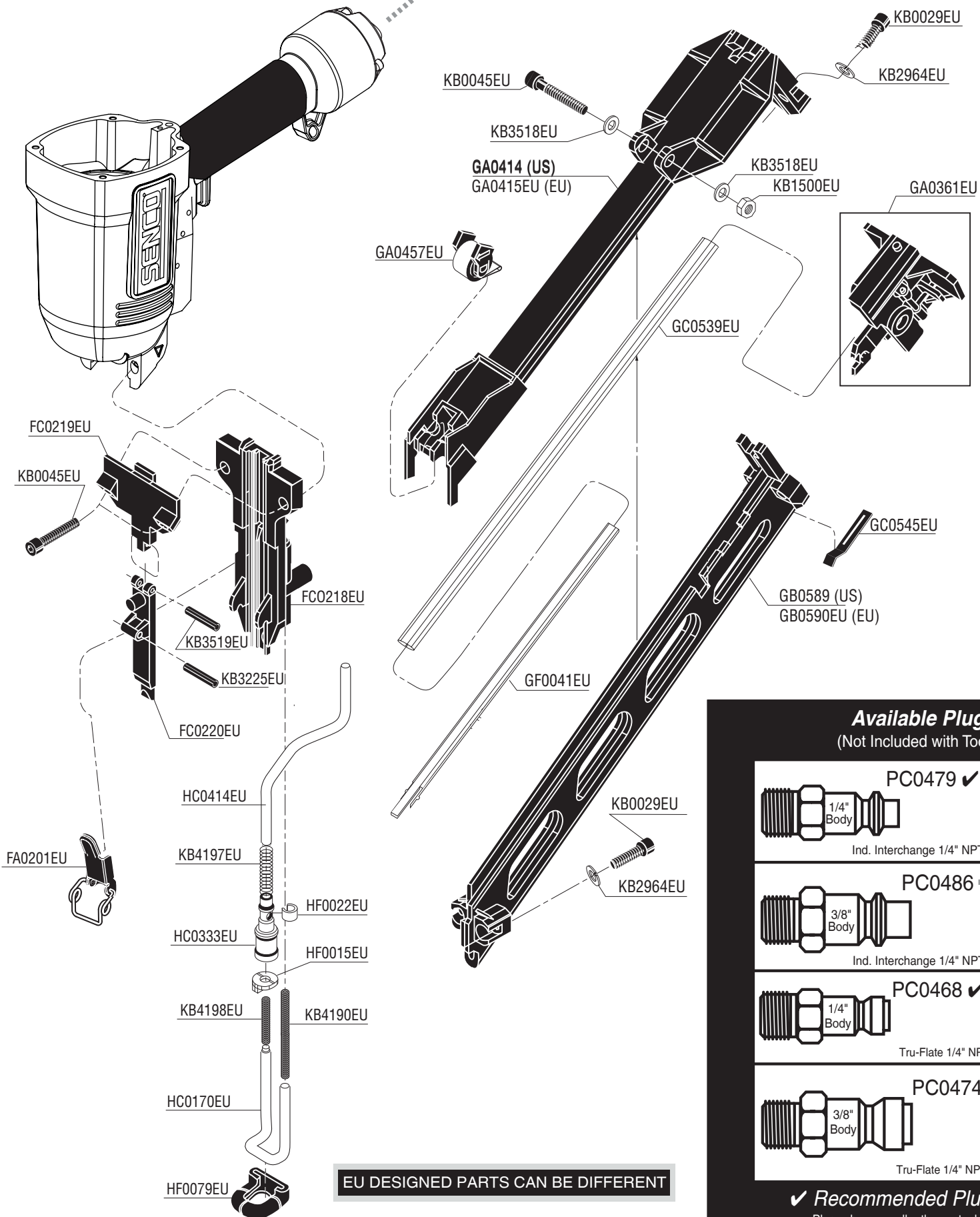
Available Triggers

Contact Actuation HA0161EU

Sequential Actuation HA0162EU

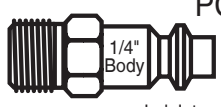
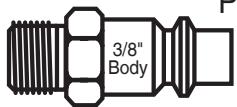
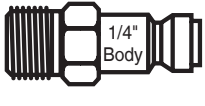
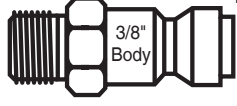
FinishPro® 42XP

SENCO®



EU DESIGNED PARTS CAN BE DIFFERENT

Available Plugs (Not Included with Tool)

	PC0479 ✓
1/4" Body	Ind. Interchange 1/4" NPT
	PC0486
3/8" Body	Ind. Interchange 1/4" NPT
	PC0468 ✓
1/4" Body	Tru-Flate 1/4" NPT
	PC0474
3/8" Body	Tru-Flate 1/4" NPT

✓ **Recommended Plugs**
Plugs shown smaller than actual size

NFE04 G Revised August 23, 2011 (Replaces 5/28/10) © 2011 by Senco Brands, Inc. Cincinnati, Ohio 45245 - U.S.A.

FinishPro® 42XP 15 ga. Finish Nailer

REPLACEMENT PARTS LIST • LISTA DE PARTES DE REPUESTO • ERSATSTEILE-LISTE • LISTE DE PIÈCES DE RECHANGE

PART NO.	DESCRIPTION	DESCRIPCIÓN	BESCHREIBUNG	DÉSIGNATION
AB0195EU	MAIN BODY ASSEMBLY	ASAMBLE DE CARCASA	GEHÄUSE-ZUSAMMENBAU	CORPS D'ASSEMBLÉE
AC0226EU	SEAL	SELLO	DICHTUNG	JOINT
AC0230EU	SEAL	SELLO	DICHTUNG	JOINT
AC0238EU	PLATE	PLACA	PLATTE	PLAQUE
AC0315EU	END CAP	TAPA	KAPPE	BOUCHON
AC0316EU	CAP	TAPA	KAPPE	BOUCHON
AF0064EU	DEFLECTOR	DEFLECTOR	ABWEISER	DÉFLECTEUR
BA0146EU	VALVE ASSEMBLY	ASAMBLE DE VALVULA	VENTIL-ZUSAMMENBAU	VALVE D'ASSEMBLÉE
BB0199EU	STOP	TOPE	PUFFER	ARRÊT
BC0370EU	MUFFLER	SILENCIADOR	DÄMPFER	SILENCIEUX
BC0451EU	CYLINDER	CILINDRO	ZYLINDER	CYLINDRE
BF0237EU	SEAL	SELLO	DICHTUNG	JOINT
BF0238EU	RETAINER	JUNTA TÓRICA	SICHERUNGSRING	RETENUE
BF0249EU	SEAL	SELLO	DICHTUNG	JOINT
CA0103EU	VALVE ASSEMBLY	ASAMBLE DE VALVULA	VENTIL-ZUSAMMENBAU	VALVE D'ASSEMBLÉE
EA0165EU	PISTON ASSEMBLY	ASAMBLE DE PISTON	KOLBEN-ZUSAMMENBAU	PISTON D'ASSEMBLÉE
FA0201EU	LATCH ASY	ASAMBLE DE UNETA	VERSCHLUSS-ZUSAMMENBAU	DOIGT DE RETENUE D'ASSEMBLÉE
FC0067EU	FINGER GRIP	AGARRADERO	FINGERGRIF	GAINÉ EN CAOUTCHOUC
FC0218EU	GUIDE BODY	PLACA DE NARIZ	NAGELFÜHRUNG	FRONT
FC0219EU	PLATE	PLACA	PLATTE	PLAQUE
FC0220EU	DOOR	PUERTA	ABDECKSCHIEBER	PORTE
GA0361EU	FEEDER SHOE ASY	ALIMENTADOR	NAGELSCHIEBER	POUSSOIR
GA0414	SHROUD (US)	PROTECTOR	ABDECKUNG	CACHE
GA0415EU	SHROUD (EU)	PROTECTOR	ABDECKUNG	CACHE
GA0457EU	FEEDER SPRING ASY	RESORTE	ZUFÜHRFEDER	RESSORT
GB0589	RAIL (US)	CARRIL	SCHIENE	RAIL
GB0590EU	RAIL (EU)	CARRIL	SCHIENE	RAIL
GC0539EU	RAIL	CARRIL	SCHIENE	RAIL
GC0545EU	RETAINER	JUNTA TÓRICA	SICHERUNGSRING	RETENUE
GF0041EU	RAIL	CARRIL	SCHIENE	RAIL
HA0161EU	TRIGGER ASY (CONTACT ACT.)	ASAMBLE DE GATILLO	AUSLÖSER-ZUSAMMENBAU	GACHETTE D'ASSEMBLÉE
HA0162EU	TRIGGER ASY (SEQUENTIAL ACT.)	ASAMBLE DE GATILLO	AUSLÖSER-ZUSAMMENBAU	GACHETTE D'ASSEMBLÉE
HC0170EU	SAFETY ELEMENT (LOWER)	SEGURO DE INFERIOR	UNTERSICHERHEITSVORRICHTUNG	SÉCURITÉ EN DESSOUS
HC0333EU	ADAPTOR	ADAPTADOR	ADAPTER	ADAPTATEUR
HC0414EU	SAFETY ELEMENT (UPPER)	SEGURO DE SUPERIOR	OBERSICHERHEITSVORRICHTUNG	SÉCURITÉ EN DESSUS
HF0015EU	SPACER	SEPARADOR	DISTANZSTÜCK	ENTRETOISE
HF0022EU	RETAINER	JUNTA TÓRICA	SICHERUNGSRING	RETENUE
HF0079EU	CUSHION	AMORTIGUADOR	SCHUTZ	COUSSIN
HF0102EU	COVER	CUBIERTA	ABDECKUNG	COUVERCLE
KB0020EU	SCREW	TORNILLO	SCHRAUBE	VIS
KB0029EU	SCREW	TORNILLO	SCHRAUBE	VIS
KB0045EU	SCREW	TORNILLO	SCHRAUBE	VIS
KB1500EU	NUT	TUERCA	MUTTER	ÉCROU
KB2964EU	WASHER	ARANDELA	SCHEIBE	RONDELLE
KB2968EU	WASHER	ARANDELA	SCHEIBE	RONDELLE
KB3225EU	PIN	PASADOR	STIFT	GOUPILLE
KB3389EU	WASHER	ARANDELA	SCHEIBE	RONDELLE
KB3391EU	WASHER	ARANDELA	SCHEIBE	RONDELLE
KB3409EU	SCREW	TORNILLO	SCHRAUBE	VIS
KB3518EU	WASHER	ARANDELA	SCHEIBE	RONDELLE
KB3519EU	PIN	PASADOR	STIFT	GOUPILLE
KB3617EU	PIN	PASADOR	STIFT	GOUPILLE
KB4190EU	SPRING	MUELLE	FEDER	RESSORT
KB4197EU	SPRING	MUELLE	FEDER	RESSORT
KB4198EU	SPRING	MUELLE	FEDER	RESSORT
KC0055EU	PIN	PASADOR	STIFT	GOUPILLE
KC0062EU	RETAINER	JUNTA TÓRICA	SICHERUNGSRING	RETENUE
LB0018EU	SEAL	SELLO	DICHTUNG	JOINT
LB0034EU	SEAL	SELLO	DICHTUNG	JOINT
LB0132EU	SEAL	SELLO	DICHTUNG	JOINT
LB0897EU	SEAL	SELLO	DICHTUNG	JOINT
LB0900EU	SEAL	SELLO	DICHTUNG	JOINT